



# VITERRA VINYL FLOORING

ASSEMBLY AND USAGE MANUAL



# GENERAL RULES

## 1. Checking the product

Before assembly, check all panels or tiles for scratches, differences in color, minor damages, etc. If you notice visible quality defects in the product, do not lay the floor and report concerns to the seller or VOX representative.

## 2. Scope of application

Viterra floors are designed for assembly in homes, apartments, shops, hotel rooms, offices. If office chairs, wheelchairs etc. are used on the floor, in sensitive places the surface should be secured with a wide double-sided tape (at least 50 cm wide) or with a rigid PVC liner.

Viterra panels and tiles have a thickness of 4.2 mm, with a wear layer of 0.3 mm.  
Resistance to static loads is:  
<200 kg / load, <30 kg / cm<sup>2</sup>

## 3. Assembly on different surfaces

### Assembly on ceramic tiles

Surface must be even and flat, and any unevenness of joints should not exceed 1 mm. If joints are deeper, they should be leveled with mortar or self-leveling mass, thanks to which recesses will not be visible on the surface of the new floor.

### Assembly on concrete floors, painted concrete, self-leveling concrete spouts and screeds

Any unevenness of surface should be filled with leveling compound, then one should sand and dust out the entire surface.

### Assembly on wooden floors and wooden floor panels

If wooden floor bends during walking, do not lay on it floorings with snap locks.

Viterra floorings can be laid on parquet nailed to slats (max. 30 cm of spacing with airy inner coating), on floor boards attached to joists and glued parquet – without gaps.

### Surface assembly with underfloor heating

Laying panels/tiles is possible on floors with water heating at a temperature not exceeding 27°C. In this case, the assembly should only be done with the use of glue.

### Not permitted surfaces

Viterra panels and tiles must not be laid on floating chipboards, floating laminate flooring, carpet flooring, in winter gardens and on verandas. In case of any doubts regarding the surface on which the product is to be laid, please consult your VOX representative.

## 4. Assembly conditions

Lay the flooring only in rooms with a temperature of 15-26°C. If air temperature in a given room exceeds 30°C, it is necessary to glue the flooring with heat-resistant adhesive.

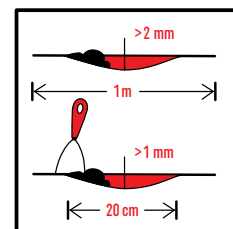
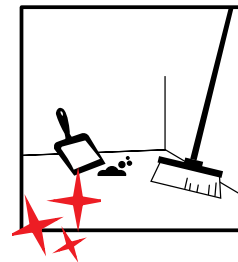
In places with high insolation and near fireplaces, Viterra tiles and panels should be glued using a two-component polyurethane or acrylic adhesive resistant to high temperatures. Spot gluing of panels or tiles to surface is also recommended in places exposed to particularly intensive use.

# PREPARATION OF SURFACE

## 1. Basic requirements

Place panels/tiles on even, clean, flat, dry and solid surface. Therefore, it should be thoroughly dried and cleaned of dust, all foreign matter and residues of finishing products.

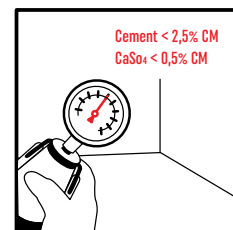
Surface should be smooth and free from any losses, and its permissible flatness is max. 2 mm per 1-meter section.



## 2. Permissible humidity

The moisture content of concrete surface must not exceed 2.5% as measured by high-speed apparatus for determining moisture.

Surface moisture: cement <2.5% CM, SaSo4 <0.5% CM.



## 3. Preparation of surface that does not meet the requirements

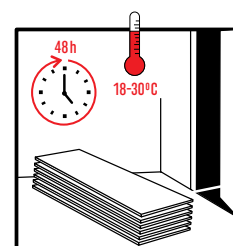
Surface, whose humidity is below 4.5%, should be protected with a P3 class spout, and if moisture content of surface exceeds 7%, it should be covered with a damp proofing (before coating with repair mortar). Resin mortar (NF designation for products intended for concrete repair) can be used for leveling unevenness and losses.

# ASSEMBLY

## 1. Preparation

Viterra panels/tiles should be stored at room temperature in rooms where they will be laid at least 48 hours before assembly.

During assembly, the room temperature should be 18-30°C. If it is lower or higher, it is necessary to cover the entire surface with glue.

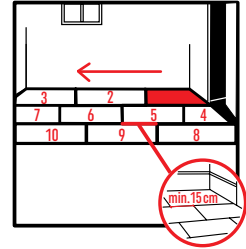
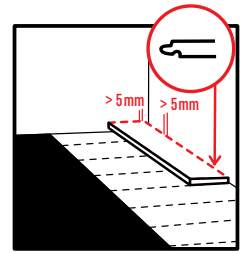




## 2. Layout of panels or tiles

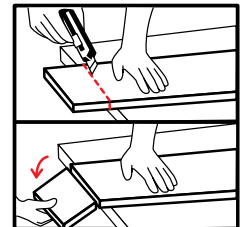
Principles to be followed when planning the layout of the Viterra panels/tiles (separately for each room):

- start laying from room threshold, place subsequent parts of the flooring moving backwards (outside from it) with tongues of locks facing the wall,
- panels/tiles should be placed perpendicular to the wall with the main window or across,
- panels/tiles in corridors should always be laid in the direction of movement,
- cut pieces of panels/tiles at the ends of rows should not be shorter than 1/3 of the length,
- length of cut panels/tiles, as well as passages between them should be at least 15 cm,
- distance of unshaped elements from the wall should be equal to 0.1% of the width of the entire floor, but not larger than 5 mm. Gaps at edges of the floor should be covered with a finishing profile,
- pay particular attention to the use of expansion joints between the frame and the floor,
- panels / tiles should not be blocked by heavy items, such as kitchen furniture, kitchen island, heavy cabinets, built-in furniture systems etc. Between these objects and the floor and expansion joint should be arranged. The same applies to the area next to the wall. Cabinets fixed to the floor must be installed directly to the floor, but they must not touch it,
- Panels arranged in one direction should not be longer than 20m. For longer distances, it is required to arrange expansion joints between rooms.



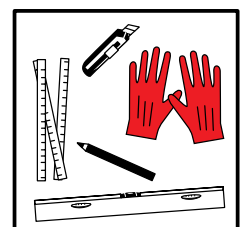
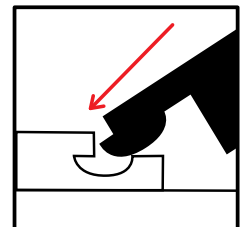
## 3. Cutting

In order to cut the panel/tile, make a cut using a knife (from the top side), then bend it and break off the unnecessary piece. Remove burrs using hook blade, and cut pens along outside edges of the flooring.



## 4. Fastening locks

Before connecting the tongue-and-groove panels, make sure that there are no burrs on profiled edges of lock. In order to fasten locks, one must carefully put the groove over the pen, hammer one panel/tile to the lock, tapping it lightly with a plastic hammer, starting from the shorter edge. It is recommended to tighten the lock with a special LVT-click roller (start rolling from the short side). Required tools: knife, measuring tape, metal ruler, recoilless hammer and LVT-click roller.

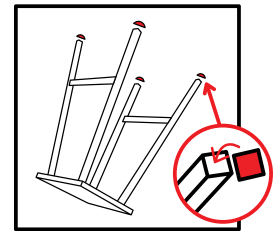


# USE AND CARE

It is not allowed to move heavy furniture over panels/tiles, because it may cause scratches.



The flooring is suitable for use immediately after assembly. Places where it is used intensively or placing heavy furniture require gluing the flooring or using protective mats. Do not use furniture with rubber feet pads, because they can leave marks on the flooring. Remember that putting heavy objects on panels / tiles may cause their irreversible deformation.



For cleaning the Viterra flooring, products intended for LVT floors should be used.

